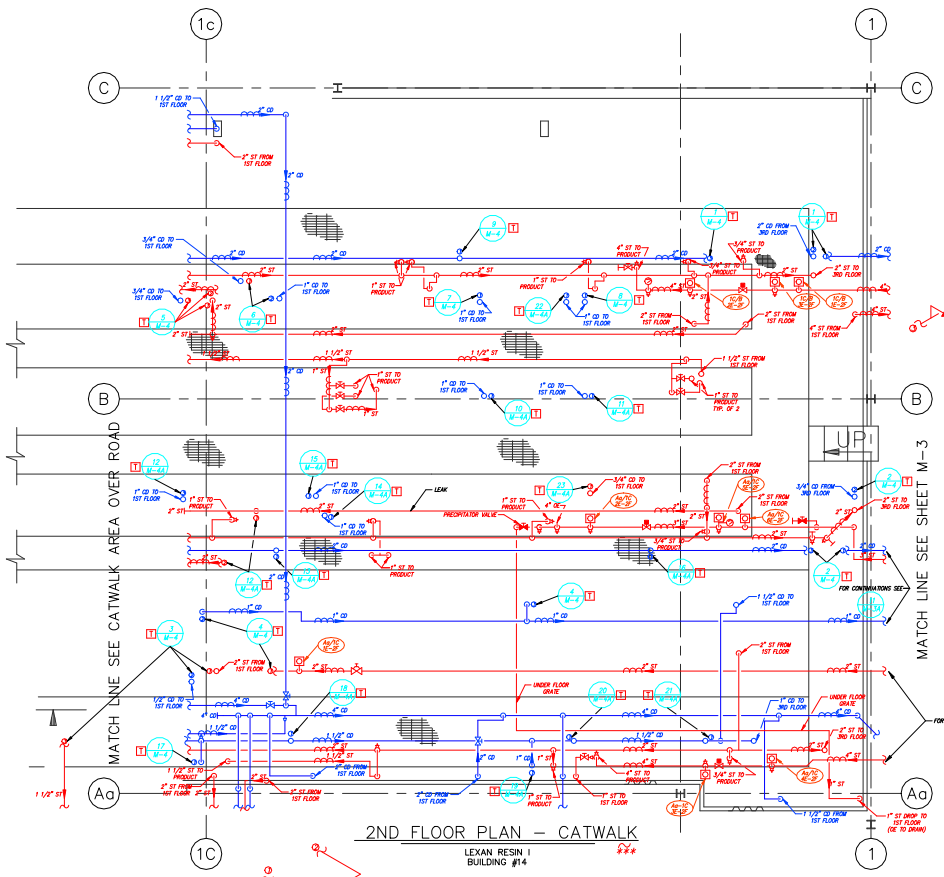
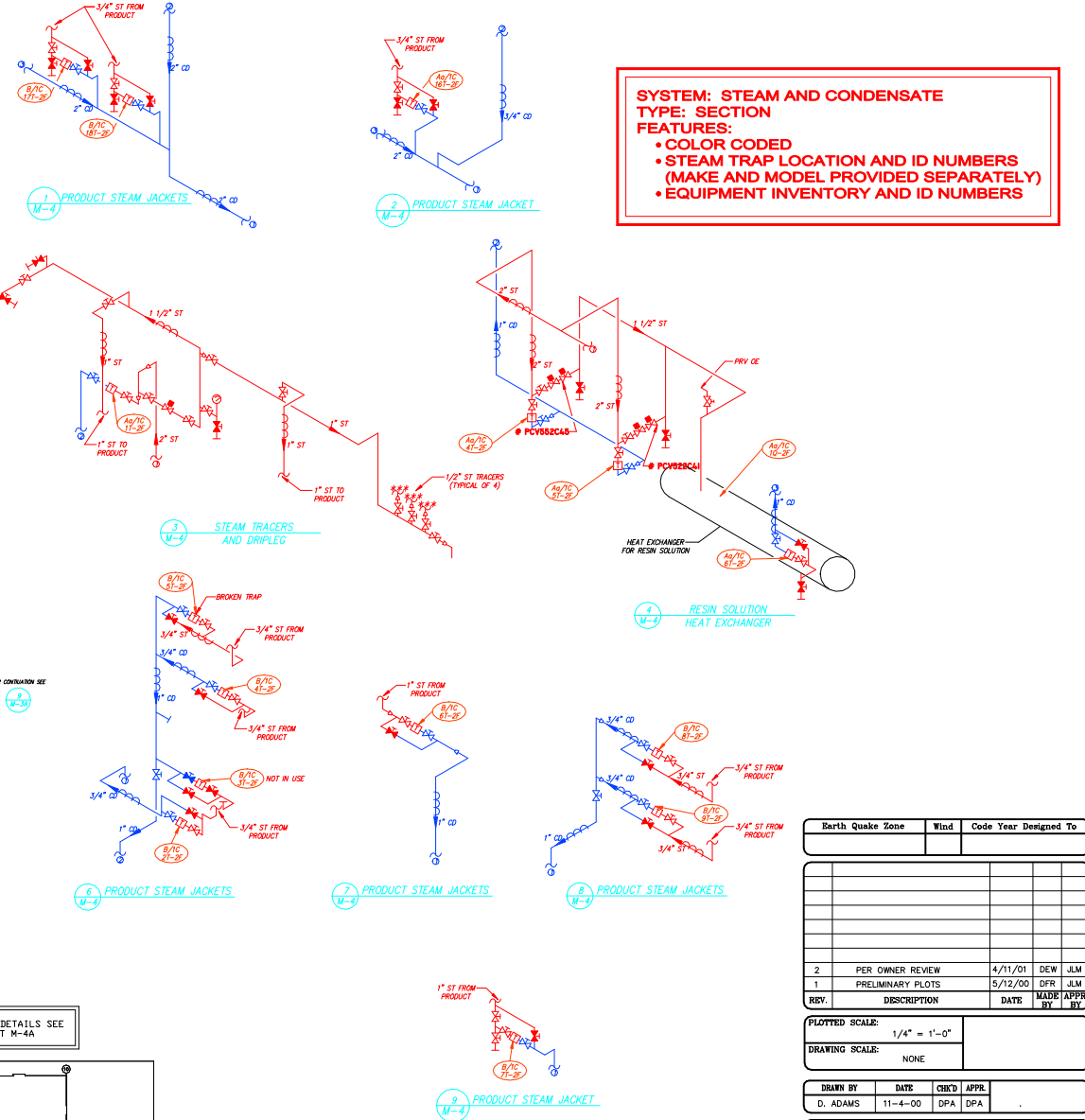


**SYSTEM: STEAM AND CONDENSATE**  
**TYPE: SECTION**  
**FEATURES:**

- COLOR CODED
- STEAM TRAP LOCATION AND ID NUMBERS (MAKE AND MODEL PROVIDED SEPARATELY)
- EQUIPMENT INVENTORY AND ID NUMBERS



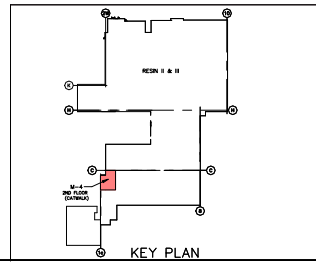
**2ND FLOOR PLAN - CATWALK**  
 LEXAN RESIN I BUILDING #14



NOTE: FOR DETAILS SEE SHEET M-4A

LEGEND	
	STEAM PIPING
	CONDENSATE PIPING
	FLOW ARROW
	PIPE DROP
	TEE OFF BOTTOM OF PIPE
	PIPE RISER
	VALVE IN DROP
	FLOOR/CEILING
	WALL
	RENDER
	FLUE
	CONTINUATION
	OPEN DRAINED PIPE
	OR H/O LOW NO LONGER FOLLOW PIPE
	AUTOMATIC VALVE
	FLOAT VALVE/LEVEL CONTROL
	VALVE - NORMALLY OPEN
	VALVE - NORMALLY CLOSED
	PRESSURE REGULATOR
	NOSE
	GAUGE
	STRAINER
	PUMP
	METER
	INSULATION
	TURBINE
	TRANSMITTER
	STEAM TRAP
	EXISTING STEAM MANHOLE
	EXISTING CONDENSATE MANHOLE

ABBREVIATIONS	
ST	STEAM
CD	CONDENSATE



NOTE: WHEN POSSIBLE, PIPE SIZES WERE VERIFIED. HOWEVER, MOST OF THE PIPING WAS INSULATED, AND INSULATION THICKNESS VARIED. THEREFORE IN MOST CASES PIPE SIZE WAS ESTIMATED. ACTUAL PIPE SIZE MAY NEED TO BE CONFIRMED BY PLANT PERSONNEL

Barth Quake Zone	Wind	Code Year	Designed To
------------------	------	-----------	-------------

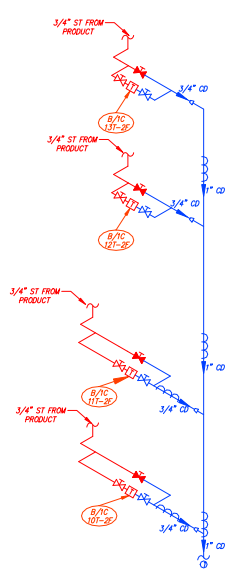
REV.	DESCRIPTION	DATE	MADE APPR. BY
2	PER OWNER REVIEW	4/11/01	DEW JLM
1	PRELIMINARY PLOTS	5/12/00	DFR JLM

PLOTTED SCALE:	1/4" = 1'-0"
DRAWING SCALE:	NONE

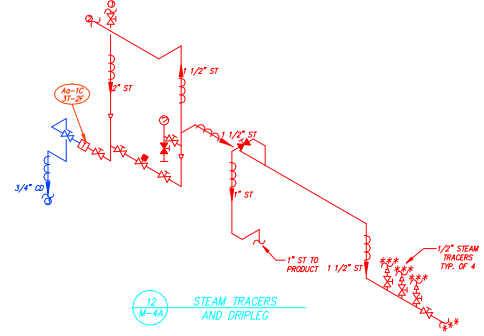
DRAWN BY	DATE	CHK'D	APPR.
D. ADAMS	11-4-00	DPA	DPA

<b>PLANT NAME</b>	
TITLE: STEAM AND CONDENSATE	
CONTRACTOR:	<b>HYDROCORP</b> <small>the water systems professionals</small>
ENG. FIRM PROJECT NO.	WORKFLOW FILENAME
CAD FILE NAME	DRAWING NO.
SFT NO.	REV. NO.
	2

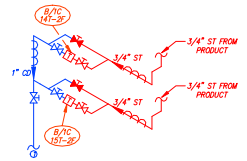
**SYSTEM: STEAM AND CONDENSATE**  
**TYPE: ISOMETRIC DETAILS**



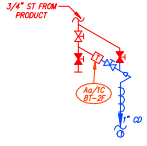
10 PRODUCT STEAM JACKET  
M-4A



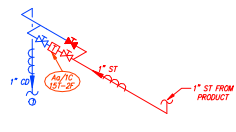
12 STEAM TRACERS  
AND DRIPLEG  
M-4A



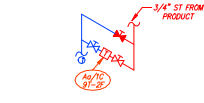
11 PRODUCT STEAM JACKET  
M-4A



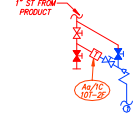
13 PRODUCT STEAM JACKET  
M-4A



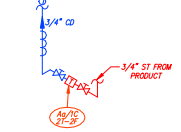
14 PRODUCT STEAM JACKET  
M-4A



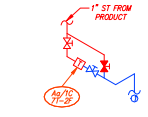
15 PRODUCT STEAM JACKET  
M-4A



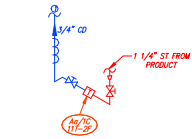
16 PRODUCT STEAM JACKET  
M-4A



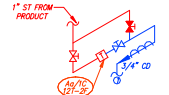
17 PRODUCT STEAM JACKET  
M-4A



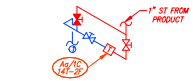
18 PRODUCT STEAM JACKET  
M-4A



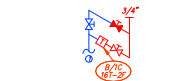
19 PRODUCT STEAM JACKET  
M-4A



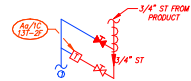
20 PRODUCT STEAM JACKET  
M-4A



21 PRODUCT STEAM JACKET  
M-4A

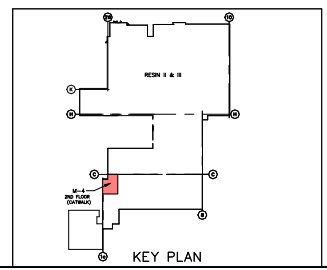


22 STEAM TRAP  
NOT IN USE  
M-4A



23 PRODUCT STEAM JACKET  
M-4A

LEGEND		ABBREVIATIONS	
	STEAM PIPING	ST	STEAM
	CONDENSATE PIPING	CD	CONDENSATE
	FLOW ARROW		
	PIPE DROP		
	TEE OFF BOTTOM OF PIPE		
	PIPE RISER		
	VALVE IN DROP		
	FLOOR/CEILING		
	REDUCER		
	FLUE		
	CONTINUATION		
	OPEN ENDED PIPE		
	OR LONGER FOLLOW PIPE		
	AUTOMATIC VALVE		
	FLOAT VALVE/LEVEL CONTROL		
	VALVE - NORMALLY OPEN		
	VALVE - NORMALLY CLOSED		
	PRESSURE REGULATOR		
	HOSE		
	SAUCE		
	STRAINER		
	PUMP		
	METER		
	INSULATION		
	TURBINE		
	TRANSMITTER		
	STEAM TRAP		
	EXISTING STEAM		
	EXISTING CONDENSATE		



NOTE:  
FOR DETAIL LOCATION  
SEE SHEET M-4

Earthquake Zone	Wind	Code	Year	Designed To
2	PER OWNER REVIEW	4/11/01	DEW	JLM
1	PRELIMINARY PLOTS	5/12/00	DFR	JLM
REV.	DESCRIPTION	DATE	MADE BY	APPR. BY
PLOTTED SCALE:		1/4" = 1'-0"		
DRAWING SCALE:		NONE		
DRAWN BY	DATE	CHECK'D	APPR.	
D. ADAMS	11-4-00	DPA	DPA	C. POIRIER
<b>PLANT NAME</b>				
TITLE: STEAM AND CONDENSATE DETAILS FOR SHEET 2				
CONTRACTOR: <b>HYDROCORP</b> <small>the water energy corporation</small>				
ENG. FIRM PROJECT NO.			WORKFLOW FILENAME	
CAD FILE NAME	DRAWING NO.	SHT NO.	REV. NO.	
		2A		